

Minus4Plus6



[Main](#) | [GMT II & SD](#) | [Price Evolution](#) | [Ouch!](#) | [Maintenance](#) | [Photos](#) | [GMTII & Submariner](#) | [GMTII-T & GMTII-C](#) | [Bracelet Fitting](#) | [Caseback](#)

Rolex Number Reference - Case, Dial, Bracelet, Serial Numbers, Factoids

[Prices](#) / [IW](#) / [Photos](#) / [GMT & Sub](#) / [GMTII 16710 & 116710](#) / [ETA 7750](#) / [RSS](#) / [Contact](#)

- [About Minus4Plus6.com](#)
- [Rolex Price Evolution](#)
- [Rolex Price Lists](#)
- [Rolex Number Reference](#)
- [Reference .PDFs](#)
- [Ouch! Tough & Broken Rolex](#)
- [Rolex MP3 Ringtones & Videos](#)
- [Cool Watch Stuff](#)

- [A Modern Rolex Anomaly](#)
- [GMT Traditional & GMTII - C](#)
- [Submariner & GMTII](#)
- [GMTII & SeaDweller](#)

- [Clean Case & Bracelet](#)
- [Bracelet Fitting](#)
- [Regulating a Rolex](#)
- [Servicing a Rolex](#)
- [Sapphire Caseback](#)

- [Rolex Accessories](#)
- [Rolex Dealer Cards](#)

Rolex Number Reference

Serial Numbers Clasp Codes Model Numbers Country Codes Red Letters Inserts Sapphire

Rolex frequently uses numbers and letters to identify model year, model number, bracelet type, as well as other production variables. Although not verified by Rolex, these numbers are fairly prevalent on the Internet. This chart is compiled from various sources on the web and the 16710 Technical Sheets on the early years (1925 - 1943). Please **contact** Minus4Plus6 to report any errors/corrections.

Rolex Serial Number Listing

Like many watch manufacturers, Rolex identifies the production year using either a serial number range or a letter prefix. The case numbers below roughly indicates the year the watch case was produced and distributed to Authorized Dealers (ADs). The case serial number does not indicate when the watch movement was produced which increases the possibility that the movement is older than the watch case. Nonetheless, the case number is a generally accepted method to roughly determine the age of a Rolex watch. The case number is located between the lugs at 6:00PM, and on newer Rolex models starting in 2003 the serial number is located on the Rolex-Rolex-Rolex tent at the 6:00 o'clock position.

Rolex reached 999,999 in mid-1950's and began over starting with 100,000. During the serial number transition years during the 1950's, the manufacture date was stamped the inside of the case back with a Roman numeral designation for quarter. For example, a II 54, indicated for the second quarter of 1954 .

One good resource for serial number reference and research is the [Vintage Rolex Forum serial number project](#).



- 20000 - 1925
- 21691 - 1927
- 24747 - 1928
- 28290 - 1930
- 29312 - 1932
- 29993 - 1933
- 30823 - 1934
- 35365 - 1935
- 37596 - 1936
- 40920 - 1937
- 43739 - 1938
- 71224 - 1939
- 99775 - 1940
- 106047 - 1941
- 143509 - 1942
- 230878 - 1943
- 269561 - 1944
- 302459 - 1945
- 387216 - 1946
- 529163 - 1947
- 628840 - 1948
- 710776 - 1951
- 840396 - 1952
- 929426 - 1953 (Year starting the I - IV quarter designation until 1970)**

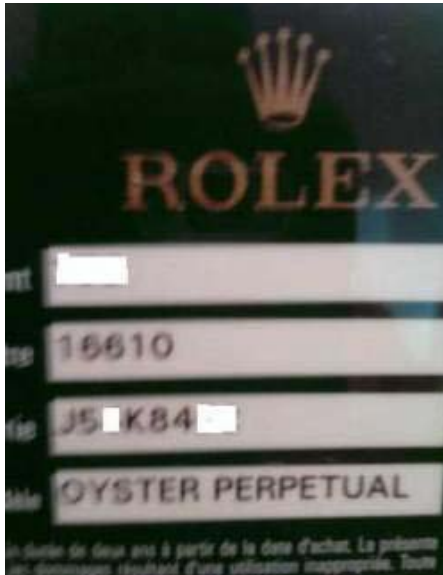
Section Links

- [GMTII vs GMTII - C](#)
- [Submariner & GMTII](#)
- [GMT II & SeaDweller](#)
- [Rolex Price Evolution](#)
- [Rolex Accessories](#)
- [16710 Technical Sheets](#)
- [Bracelet Fitting](#)
- [Pocket Watch Overhaul](#)
- [Polio: Overhaul](#)
- [Rubber Dot Caseback Pad](#)
- [Sapphire Caseback](#)
- [Regulating a Rolex](#)
- [Cleaning a watch](#)
- [My 15 seconds of fame in IW](#)
- [Vintage Rolex Forum serial number project](#)
- [SeaDweller Test at 1200M .pdf \(right click & save\)](#)
- [SeaDweller Test \(Translated French\).pdf](#)
- [Rolex Ringtones & Videos](#)
- [Working with a ETA 7750](#)
- [Removing Polished Link](#)
- [YouTube Video](#)



YouTube Video on replacing a Rolex caseback with a transparent caseback (Click video to view full size) A

| | | | | | | | | | | | | | | | | | | | | | | | | | | | | | | | | | | | | | | | | | | |
|--|--|--|-------------|----------|-------------|----------|-------------|-----|-------------|---|-------------|---|-------------|---|-------------|---|-------------|---|-------------|---|------|---|-------------|---|-------------|----------|-----------------------------|----------|------------------------------|----------|------|---|------------|---|----------|---|--------------|---|-------------|---|--|--|
| <p>Carmel Get Together (GTG)</p> <hr/> <p>Various Photos</p> | <p>999999 - *1954* 100001 - 1955 139400 - 1956 321884 - 1957 360171 - 1958 399000 - 1959 511687 - 1960 646900 - 1961</p> | <p>downloadable .wmv version is available here</p> <p>Main Caseback Prices iW-Heuer Photos Ringtones RSS Contact © 2010 Sheldon K. Smith * No affiliation with Rolex or Rolex USA</p> | | | | | | | | | | | | | | | | | | | | | | | | | | | | | | | | | | | | | | | | |
| <p>Great Websites</p> <hr/> <p>Subscribe Minus4Plus6 RSS</p> <p>Contact Minus4Plus6.com</p> <hr/> <p>Share</p> <hr/> | <p>763663 - 1962 950000 - 1963 985015 - 1964 1259699 - 1965 1289727 - 1966 1554000 - 1967 2163900 - 1967 2426800 - 1968 2060000 - 1969 2504211 - 1970 3215500 - 1971 3478400 - 1972 3741300 - 1973 4004200 - 1974 4267100 - 1975 4538000 - 1976 5008000 - 1977 5482000 - 1978 5952834 - 1979 6434000 - 1980 6594000 - 1981 7129351 - 1982 7862000 - 1983 8338000 - 1984 8614000 - 1985 9290000 - 1986 9999999 - 1987</p> | | | | | | | | | | | | | | | | | | | | | | | | | | | | | | | | | | | | | | | | | |
|  <p>15 seconds of fame in International Watch Magazine</p> | | | | | | | | | | | | | | | | | | | | | | | | | | | | | | | | | | | | | | | | | | |
|  <p>Carmel GTG in International Watch Magazine</p> | <p>Starting in 1987, Rolex added a letter prefix to be able to discern the case production year.</p> <table border="0"> <tr><td>Rxxxxxxx</td><td>1987 - 1989</td></tr> <tr><td>Lxxxxxxx</td><td>1988 - 1990</td></tr> <tr><td>Exxxxxxx</td><td>1990 - 1992</td></tr> <tr><td>X-N</td><td>1991 - 1993</td></tr> <tr><td>C</td><td>1992 - 1993</td></tr> <tr><td>S</td><td>1993 - 1994</td></tr> <tr><td>W</td><td>1994 - 1996</td></tr> <tr><td>T</td><td>1996 - 1997</td></tr> <tr><td>U</td><td>1997 - 1998</td></tr> <tr><td>U</td><td>1998</td></tr> <tr><td>A</td><td>1998 - 1999</td></tr> <tr><td>P</td><td>1999 - 2000</td></tr> <tr><td>K Series</td><td>(intro mid-2001) 2001- 2002</td></tr> <tr><td>Y Series</td><td>(intro mid-2002) 2002 - 2003</td></tr> <tr><td>F Series</td><td>2003</td></tr> <tr><td>D</td><td>April 2005</td></tr> <tr><td>Z</td><td>May 2006</td></tr> <tr><td>M</td><td>October 2007</td></tr> <tr><td>V</td><td>August 2008</td></tr> <tr><td>G</td><td>Spring 2010 (and the start of random serial numbers)</td></tr> </table> | Rxxxxxxx | 1987 - 1989 | Lxxxxxxx | 1988 - 1990 | Exxxxxxx | 1990 - 1992 | X-N | 1991 - 1993 | C | 1992 - 1993 | S | 1993 - 1994 | W | 1994 - 1996 | T | 1996 - 1997 | U | 1997 - 1998 | U | 1998 | A | 1998 - 1999 | P | 1999 - 2000 | K Series | (intro mid-2001) 2001- 2002 | Y Series | (intro mid-2002) 2002 - 2003 | F Series | 2003 | D | April 2005 | Z | May 2006 | M | October 2007 | V | August 2008 | G | Spring 2010 (and the start of random serial numbers) | |
| Rxxxxxxx | 1987 - 1989 | | | | | | | | | | | | | | | | | | | | | | | | | | | | | | | | | | | | | | | | | |
| Lxxxxxxx | 1988 - 1990 | | | | | | | | | | | | | | | | | | | | | | | | | | | | | | | | | | | | | | | | | |
| Exxxxxxx | 1990 - 1992 | | | | | | | | | | | | | | | | | | | | | | | | | | | | | | | | | | | | | | | | | |
| X-N | 1991 - 1993 | | | | | | | | | | | | | | | | | | | | | | | | | | | | | | | | | | | | | | | | | |
| C | 1992 - 1993 | | | | | | | | | | | | | | | | | | | | | | | | | | | | | | | | | | | | | | | | | |
| S | 1993 - 1994 | | | | | | | | | | | | | | | | | | | | | | | | | | | | | | | | | | | | | | | | | |
| W | 1994 - 1996 | | | | | | | | | | | | | | | | | | | | | | | | | | | | | | | | | | | | | | | | | |
| T | 1996 - 1997 | | | | | | | | | | | | | | | | | | | | | | | | | | | | | | | | | | | | | | | | | |
| U | 1997 - 1998 | | | | | | | | | | | | | | | | | | | | | | | | | | | | | | | | | | | | | | | | | |
| U | 1998 | | | | | | | | | | | | | | | | | | | | | | | | | | | | | | | | | | | | | | | | | |
| A | 1998 - 1999 | | | | | | | | | | | | | | | | | | | | | | | | | | | | | | | | | | | | | | | | | |
| P | 1999 - 2000 | | | | | | | | | | | | | | | | | | | | | | | | | | | | | | | | | | | | | | | | | |
| K Series | (intro mid-2001) 2001- 2002 | | | | | | | | | | | | | | | | | | | | | | | | | | | | | | | | | | | | | | | | | |
| Y Series | (intro mid-2002) 2002 - 2003 | | | | | | | | | | | | | | | | | | | | | | | | | | | | | | | | | | | | | | | | | |
| F Series | 2003 | | | | | | | | | | | | | | | | | | | | | | | | | | | | | | | | | | | | | | | | | |
| D | April 2005 | | | | | | | | | | | | | | | | | | | | | | | | | | | | | | | | | | | | | | | | | |
| Z | May 2006 | | | | | | | | | | | | | | | | | | | | | | | | | | | | | | | | | | | | | | | | | |
| M | October 2007 | | | | | | | | | | | | | | | | | | | | | | | | | | | | | | | | | | | | | | | | | |
| V | August 2008 | | | | | | | | | | | | | | | | | | | | | | | | | | | | | | | | | | | | | | | | | |
| G | Spring 2010 (and the start of random serial numbers) | | | | | | | | | | | | | | | | | | | | | | | | | | | | | | | | | | | | | | | | | |



Starting in February, 2010, it is being reported that the letter designation on the serial number is disappearing. The new serial number has letters interspersed in the number. (From TKF).

Rolex Clasp Codes

On the inside of the clasp hinge is a code that designates the month and year that the clasp/bracelet was manufactured. When examining watches at an AD or watch mart, do not be surprised if a bracelet is a few years older than the watch case. In modern Rolex watches, it is rare to find a clasp code that is the same year as the watch case.

On the clasp hinge is one two letters followed by a number. The letters represent the year code, and the numbers signify the month. A clasp code of OP9 indicates the clasp/bracelet was manufactured in 2006, and the number indicates the month of September.

A = 1976
 B = 1977
 C = 1978
 D = 1979
 E = 1980
 F = 1981
 G = 1982
 H = 1983
 I = 1984
 J = 1985
 K = 1986
 L = 1987
 M = 1988
 N = 1989
 O = 1990
 P = 1991
 Q = 1992
 R = 1993
 S = 1994
 W = 1995
 V = 1996

Z = 1997
 Z - W= 1998
 X = 1999
 AB = 2000
 DE = 2001
 DT = 2002
 AD = 2003
 CL = 2004
 MA = 2005
 OP - 2006
 EO = 2007
 PJ = 2008
 LT = 2009
 RS = 2010

S = Service: Clasp replaced during a "S"ervice.

Model Numbers

On the older paper warranties (prior to 2006 and the plastic card warranty) there is a model number and a dial code. The warranties after 2006 just list the watch model code.

The model code that is both on the warranty as well as in catalogs breaks down as follows:

First three digits designates model on traditional Rolex models:

140 = Oyster Perpetual Air King and Submariner
 142 = Oyster Perpetual Chronometer 34mm and Explorer
 152 = Oyster Perpetual Date - Mens 34 mm
 162 = Oyster Perpetual DateJust – Mens 36mm
 165 = Explorer II
 166 = Submariner – SeaDweller – Yachtmaster 40mm
 167 = GMT Master II
 170 = Oyster Quartz DateJust
 189 = Oyster Perpetual Special Edition
 190 = Oyster Quartz Day-Date
 1165 Cosmograph Daytona
 1182 Oyster Perpetual Day-Date
 1183 Oyster Perpetual Day-Date Serti (With Diamonds)

After 2004-2006, the newer Rolex models have an extra 1 preceeding the model number. For example, a traditional, two-toned bezel GMT has a model number of 16710, but the newer super-cased, ceramic bezeled GMT is listed as a 116710 (extra preceeding 1).

The next digit is the bezel code. For example, a 16710 has a smooth/domed bezel. Professional watches are excluded from this list.

0 = Smooth/Domed
 1 = Engine Turned
 2 = Engraved
 3 = Fluted
 4 = Bark
 5 = Pyramie (Not Used)
 6 = Turn-O-Graph
 7 = Various
 8 = Special (Not Currently Used)
 9 = Open (Not Currently Used)

The next (sixth) digit is the metal code. In the case of a 16710, the 0 signifies stainless steel.

0 = Stainless Steel
 1 = Yellow gold Placor (Tudor)
 22 = Stainless steel and Platinum (Yachtmaster)
 3 = Stainless Steel and 18k Yellow gold (Yellow Rolesor)
 4 = Stainless Steel and 18k White gold (White Rolesor)
 5 = Gold Shell (No Longer Used)
 6 = Platinum
 7 = 14k Yellow gold (No Longer Used)

8 = 18k Yellow gold
9 = 18k White gold
BIC = Bi-Color 18k Yellow and White gold combo
TRIDOR = 18k Yellow, White and Rose gold

Country Codes & Red Letters

On watch certificates that are shipped with Non-United States Rolexes, there is a punched number in front of the serial number that signifies the country with which the watch was initially shipped by Rolex Geneva. These numbers come in handy when considering a grey-market watch to discern its where the watch was initially released.

010 - Switzerland
012 - Switzerland
013 - Switzerland
014 - Switzerland
015 - Switzerland
021 - Switzerland
025 - Switzerland
026 - Switzerland
033 - Switzerland
045 - Switzerland
100 - Germany
110 - France
113 - France
120 - Austria
121 - Austria
123 - Austria
126 - Austria
128 - Austria
130 - Belgium/Luxemburg
133 - Netherlands
134 - Netherlands
135 - Netherlands
137 - Netherlands
138 - Netherlands
150 - Spain
160 - England
170 - Italy
200 - Greece
201 - Malta
202 - Turkey
208 - Greece
213 - Portugal
217 - Portugal
226 - Denmark
228 - Denmark
233 - Denmark
237 - Iceland
265 - Sweden
267 - Sweden
270 - Sweden
271 - Sweden
283 - Finland
321 - Czech Republic
400 - Hong Kong
413 - Korea
430 - Singapore/Brunai
431 - Malaysia
440 - Taiwan
500 - India
505 - Pakistan
527 - Middle East
532 - Saudi Arabia
536 - Abu Dhabi
537 - Dubai
538 - Oman
542 - Iran

548 - Israel
 680 - South Afrika
 700 - Canada
 710 - USA
 720 - Mexico
 741 - Bahamas
 742 - Bermuda
 752 - Jamaica
 758 - Virgin Islands
 761 - Netherlands Antilles
 762 - Aruba
 765 - Antigua
 766 - Saint Martin
 767 - Grand Cayman
 768 - Panama
 770 - Venezuela
 780 - Brazil
 781 - Chile
 783 - Peru
 790 - Argentina
 810 - Australia
 818 - Philippines
 828 - China
 842 - New Zealand
 871 - Hawaii
 872 - Alaska
 873 - Guam
 888 - Hong Kong
 900 - Japan
 906 - Natex Retail, German NATO Airbase

Red Letters

On older United States paper certificates, there are a red letters stamped on the certificate signifying when the watch shipped from Rolex USA to the Authorized Dealer (AD).

R=1
 O=2
 L=3
 E=4
 X=5
 W=6
 A=7
 T=8
 C=9
 H=0

For example a code of A OXCR represents 7 2591 or July 25, 1991

16710 Bezel Insert Numbers

Traditional aluminum bezel inserts are among certain types of Rolex GMT models. For example a GMT 1675 and a 16750 utilize the same insert.

Sapphire crystallized GMT models use the same inserts. A schematic of Rolex bezel inserts and part numbers is [posted here](#) (*right click and save the .pdf to your desktop*).

The part numbers are the first 3 digits means it's a bezel insert. The next 4 or 5 is for the reference number of the watch and the last number is for the color.

Black with white numbers 315-16750-1
 Red/Blue with white numbers 315-16750-6
 Bronze/Yellow with yellow numbers 315-16753-5
 Black with yellow numbers 315-16753-1
 Black with yellow numbers 315-16758-1
 Bronze with yellow numbers 315-1675-3
 Bronze with yellow numbers 315-16758-3

Black with white numbers 315-16760-7
 Black with white numbers 315-16700-1
 Red/Blue with white numbers 315-16700-6
 Bronze/Yellow with yellow numbers 315-16713-5
 Black with yellow numbers 315-16718-1
 Bronze with yellow numbers 315-16718-3

Sapphire Evolution: Evolution from Plastic to Sapphire Crystals

Professor Rolex (Matthias) at www.r-l-x.de compiled the following data listing when Rolex evolved from plastic crystals to synthetic sapphire crystals.

| Model | Stainless | Rolessor | Gold | Platinum |
|---------------------------------|------------------------|-----------------------------------|------|----------|
| Quartz Beta 21 Ref 5100 | -- | -- | 1970 | -- |
| Perpetual Ref. 1530, 1630, 1831 | 1975 | 1975 | -- | 1975 |
| Oysterquartz | 1978 | 1978 | 1978 | -- |
| Air-King | 1991 | -- | -- | -- |
| Perpetual | -- | 1991 | 1991 | -- |
| Date | 1989 | 1989 | 1989 | -- |
| DateJust | 1989 | 1989 | 1978 | -- |
| Turn - O- Graph | New Plexi Ref 16250 | 1989 | 1989 | -- |
| Day - Date | -- | -- | 1978 | 1978 |
| Submariner 14060 | 1990 | -- | -- | -- |
| Submariner Date | 1981 | 1984 Ref. 16803 | 1981 | -- |
| Sea-Dweller | 1981 | -- | -- | -- |
| GMT Master | 1989 | New Plexi Ref 1675/3, 16753 | 1981 | -- |
| GMT Master II | 1984 | 1989 | 1989 | -- |
| Explorer | 1990 | -- | -- | -- |
| Explorer II | 1984 | -- | -- | -- |
| Cosmograph Daytona | 1988 | 1988 | 1988 | -- |

